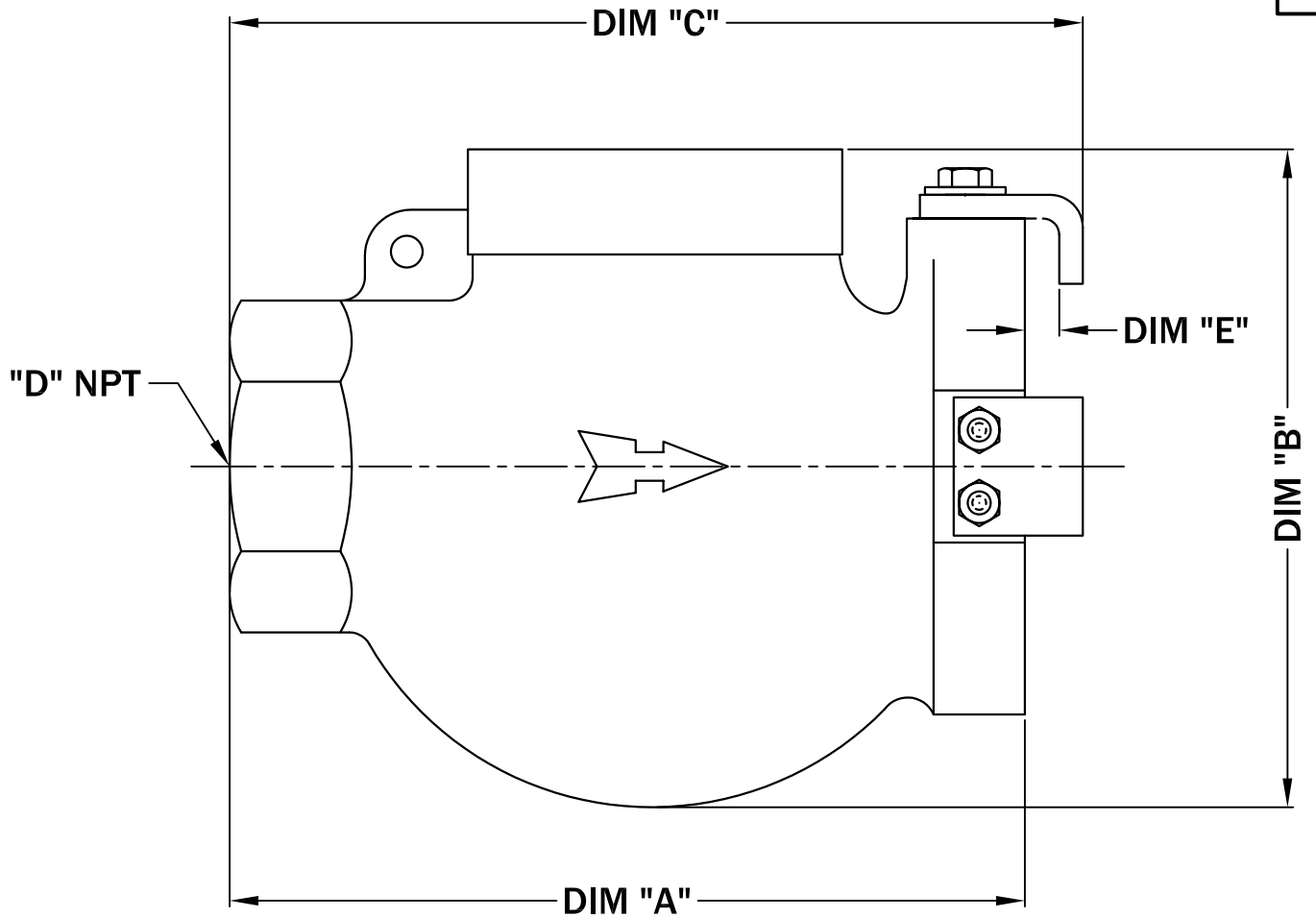


(QDV 200 SHOWN)

QUICK DISCONNECT

PAGE
1



MODEL NO:	DIM "A"	DIM "B"	DIM "C"	"D" NPT	DIM "E"	FLANGE
QDV 125	5 1/4"	5 1/8"	6"	1 1/4"	17/32"	SFL 125
QDV 200	8 5/8"	7 5/32"	9 1/4"	2"	3/8"	SFL 200

ALL INFORMATION CONTAINED IN THIS DRAWING IS
CONFIDENTIAL AND PROPRIETARY TO CONERY MFG, INC.



CHANGES	TOLERANCES	DRAWN BY	DATE
F	DECIMALS .xxx = ±.005 .xx = ±.010 FRACTIONAL x/x = ±.1/64 ANGLES x' = ±1/2'	D. MIDDLETON	05/27/04
E		MATERIAL SPECIFICATION: CAST IRON BODY W/STAINLESS STEEL COMPONENTS	
D			
C			
B			
A			

SPECIFICATION SHEET
DIMENSIONAL DATA

SCALE: PART NO.
FULL BALL VALVES