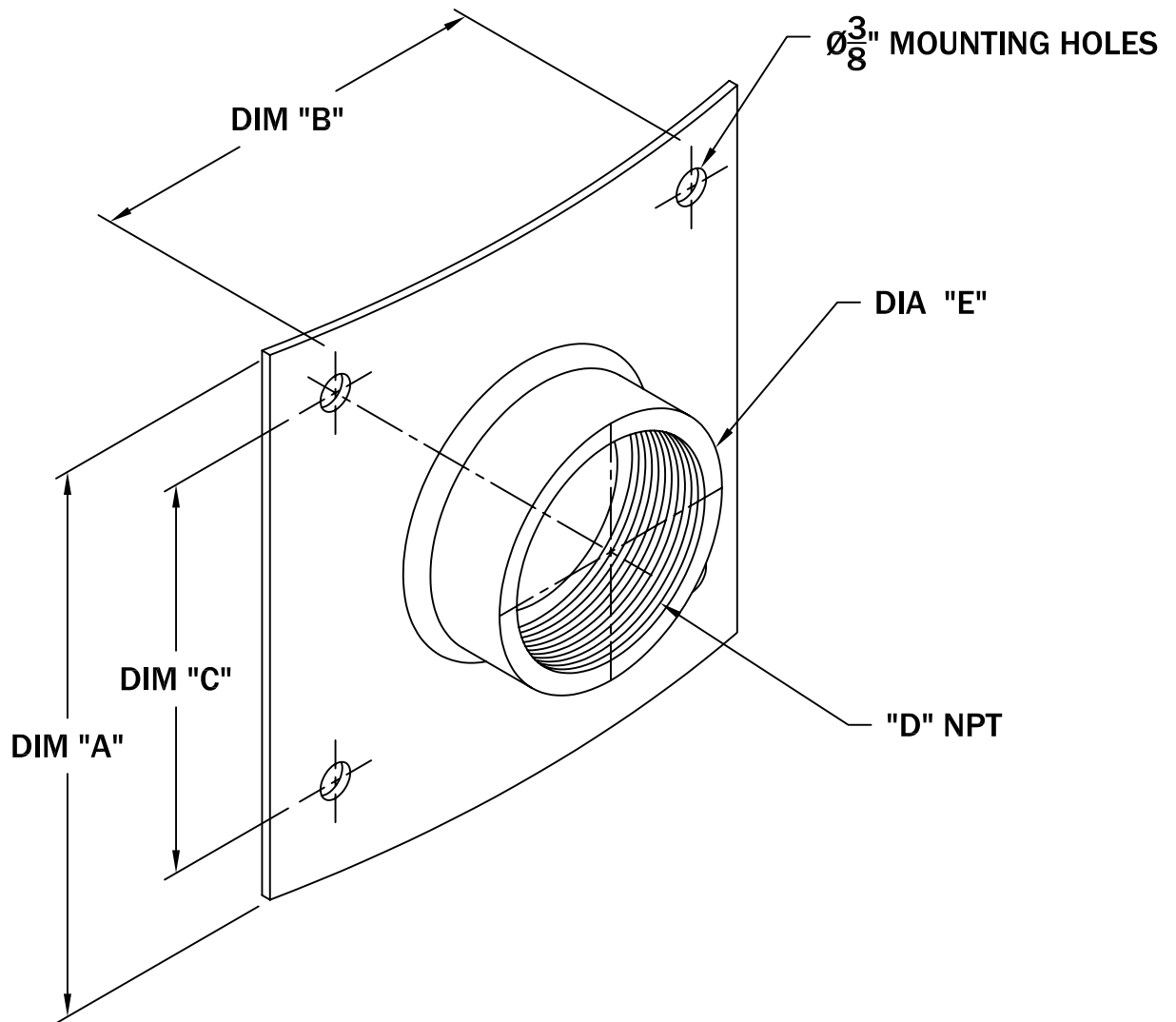


SFC 200 MODEL SHOWN  
 COUPLING LENGTH IS  $2\frac{9}{16}$ ".  
 APPROX. RADIUS OF THE PLATE IS 24".

FULL COUPLING

PAGE  
1



MODEL NO.	DIM "A"	DIM "B"	DIM "C"	"D" NPT	DIM "E"
SFC 125	5 $\frac{29}{32}$ "	4 $\frac{25}{32}$ "	4 $\frac{3}{8}$ "	1 $\frac{1}{4}$ "	1 $\frac{29}{32}$ "
SFC 200	5 $\frac{29}{32}$ "	4 $\frac{15}{16}$ "	4 $\frac{15}{16}$ "	2"	2 $\frac{13}{16}$ "

ALL INFORMATION CONTAINED IN THIS DRAWING IS  
 CONFIDENTIAL AND PROPRIETARY TO CONERY MFG, INC.

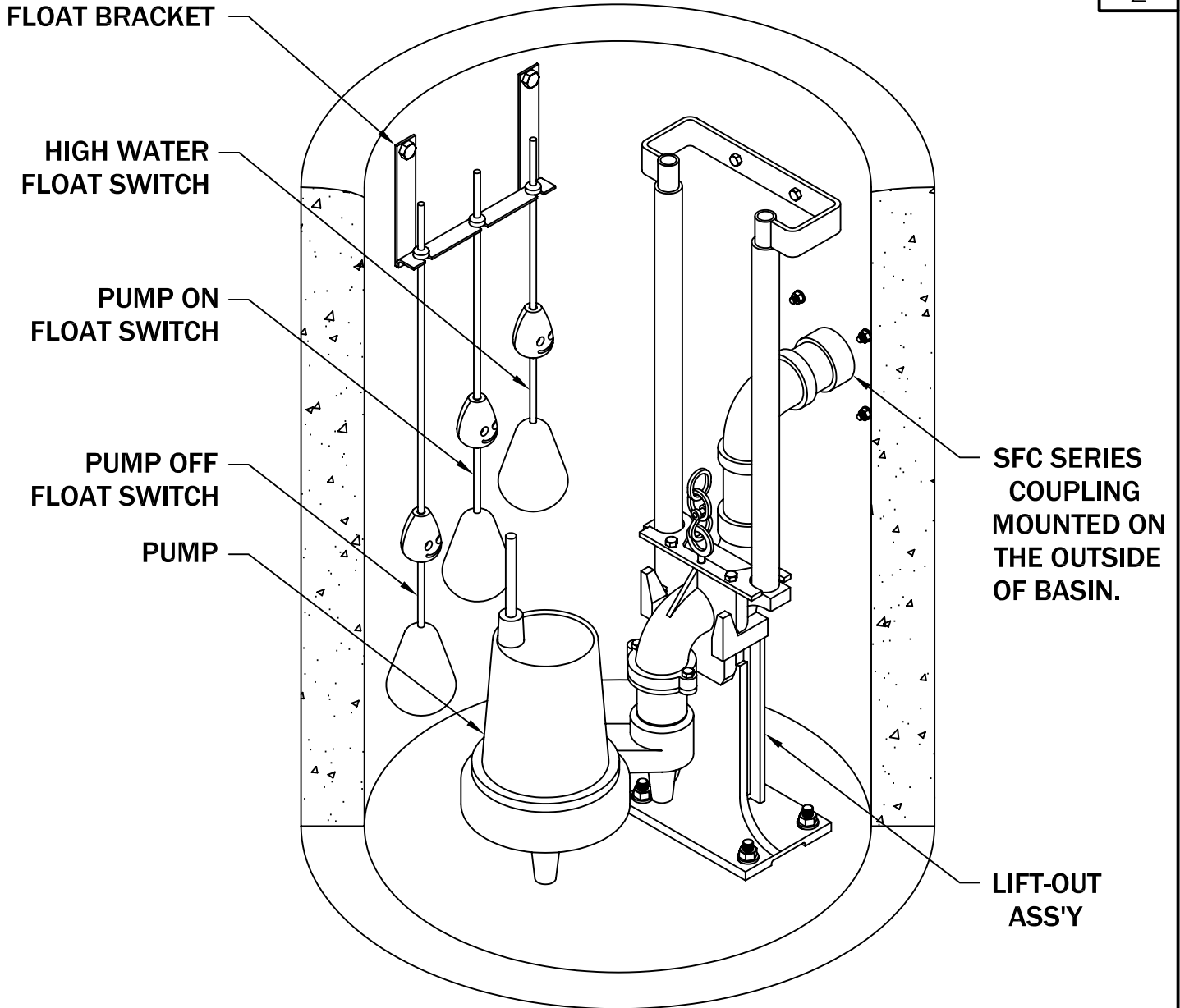


CHANGES	TOLERANCES	DRAWN BY	DATE	SPECIFICATION SHEET DIMENSIONAL DATA	
F	DECIMALS .xxx = $\pm 0.005$ .xx = $\pm 0.010$ FRACTIONAL x/x = $\pm 1/64$ ANGLES x' = $\pm 1/2$ '	D. MIDDLETON	03/22/04	SCALE:	PART NO.
E		MATERIAL SPECIFICATION:  300 SERIES SST		HALF	STAINLESS STEEL
D					
C					
B					
A					

TYPICAL APPLICATIONS

FULL COUPLING

PAGE  
2



ALL INFORMATION CONTAINED IN THIS DRAWING IS CONFIDENTIAL AND PROPRIETARY TO CONERY MFG, INC.



CHANGES	TOLERANCES	DRAWN BY	DATE
F	DECIMALS .XXX = ±.005 .XX = ±.010 FRACTIONAL X/X = ±.1/64 ANGLES X° = ±1/2°	D. MIDDLETON	03/22/04
E		MATERIAL SPECIFICATION:  300 SERIES SST	
D			
C			
B			
A			

SPECIFICATION SHEET DIMENSIONAL DATA	
SCALE:	PART NO.
HALF	STAINLESS STEEL