

NOTE: ALL DIMENSIONS ARE IN INCHES.

MATERIALS OF CONSTRUCTION:

BASE ELBOW: CAST DUCTILE IRON

LIFT-OUT FLANGE: CAST DUCTILE IRON

W/SST SEALING RING

LOWER GUIDE BRACKET: CAST DUCTILE IRON

ALL FASTENERS ARE 304 SERIES SST

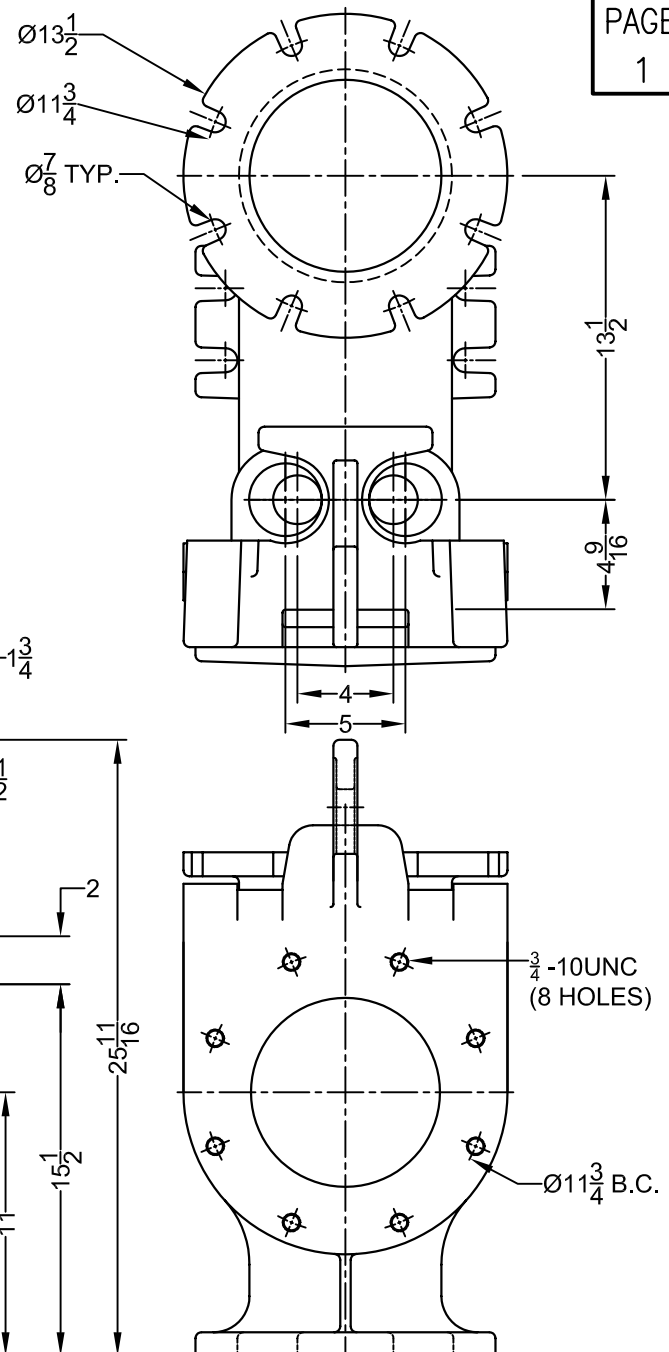
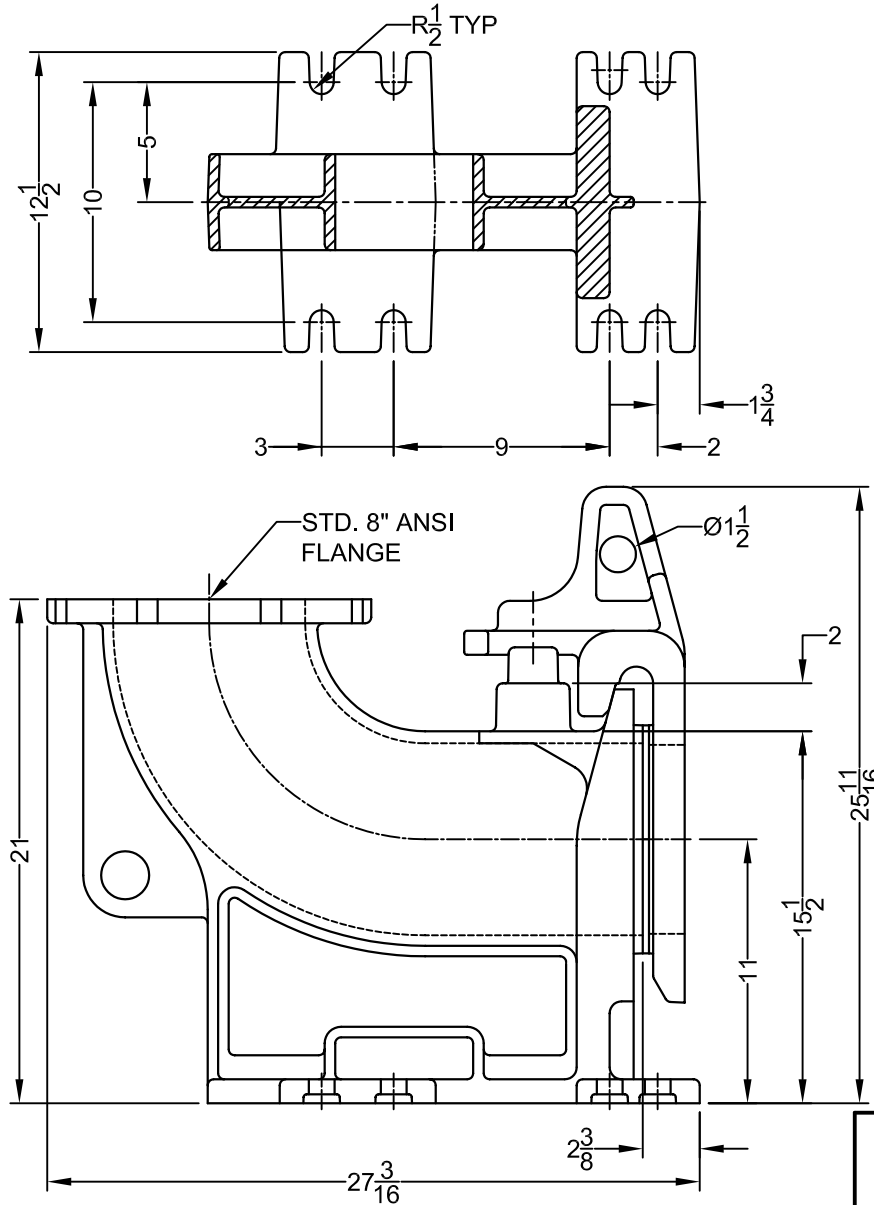
USEABLE GUIDE RAIL SIZES: 2" & 3"

SPHERICAL SOLIDS SIZE: 7-7/8" Diameter.

MAXIMUM WEIGHT ALLOWANCE: 4000lbs.

BERS-0800

PAGE  
1



ALL INFORMATION CONTAINED IN THIS DRAWING IS CONFIDENTIAL AND PROPRIETARY TO CONERY MFG, INC.



CHANGES	TOLERANCES	DRAWN BY	DATE
F	DECIMALS	D. MIDDLETON	10/03/09
E	.XXX = ±.005	MATERIAL SPECIFICATION:  AS NOTED	
D	.XX = ±.010		
C	FRACTIONAL		
B	x/x = ±.1/64		
A	ANGLES		
	x° = ±1/2°		

SPECIFICATION SHEET DIMENSIONAL DATA	
SCALE:	PART NO.
1/8	8" LIFT-OUT DIM.